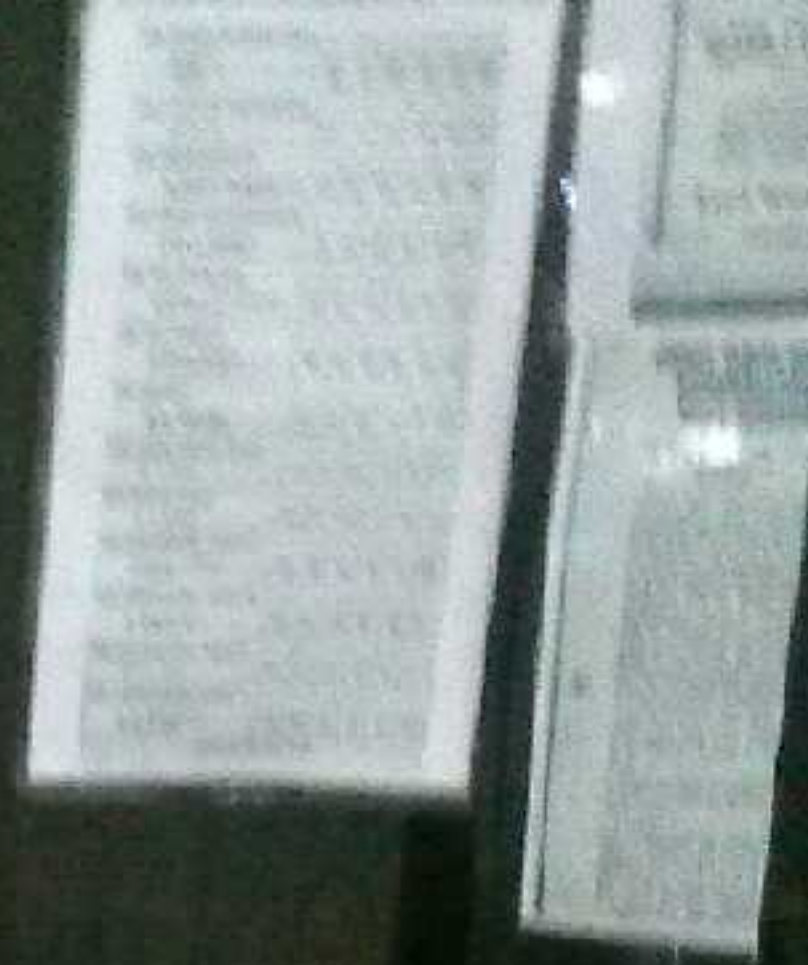
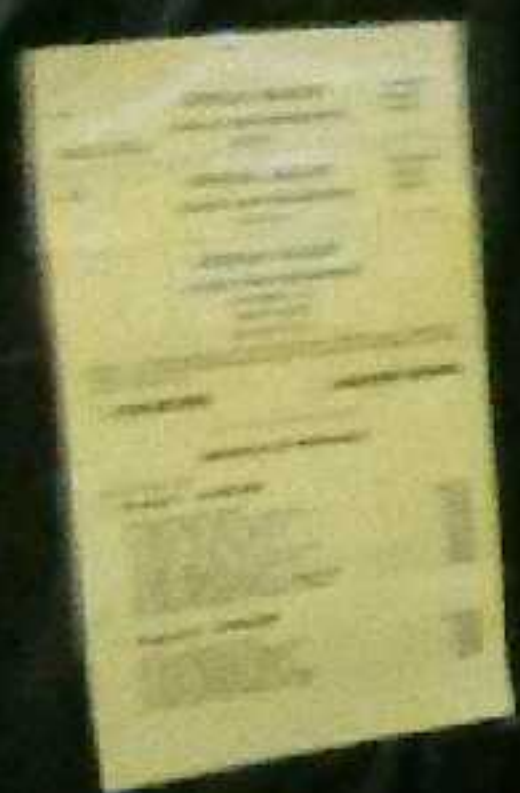


FENDRY
COUNTY
REGISTER
BOOKS
1922-1950



HENRY COUNTY SUPERVISOR OF ELECTIONS
TREASURED MEMORIES

A large black display board framed by blue LED lights. It features a central historical document, several smaller certificates and notices, and decorative elements like American flags and circular emblems. A small wooden table in front of the board holds a gift basket and a patriotic hat.

A white ballot box with a red, white, and blue eagle logo and the word "REGISTER" on its side. It sits on a table covered with a red cloth, surrounded by various informational pamphlets.

A table covered with a red cloth, decorated with a large red gift bag and several patriotic hats. It is positioned to the right of the central display board and holds various items, including a sign with an eagle logo.